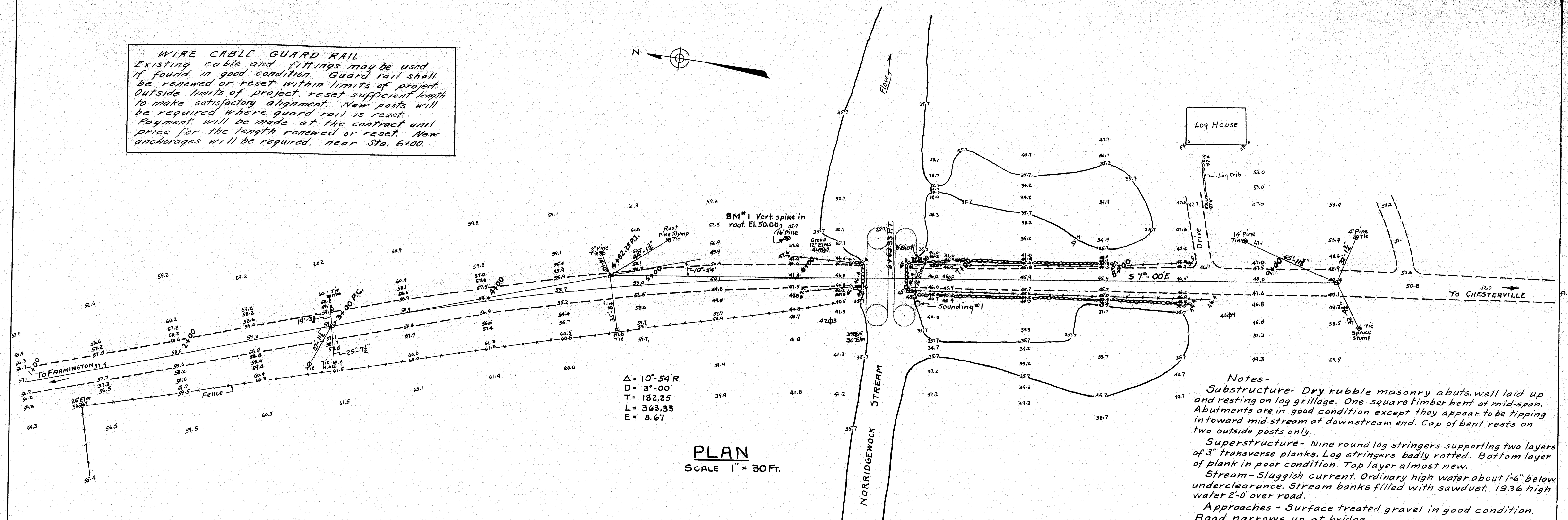
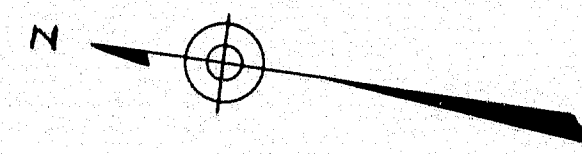


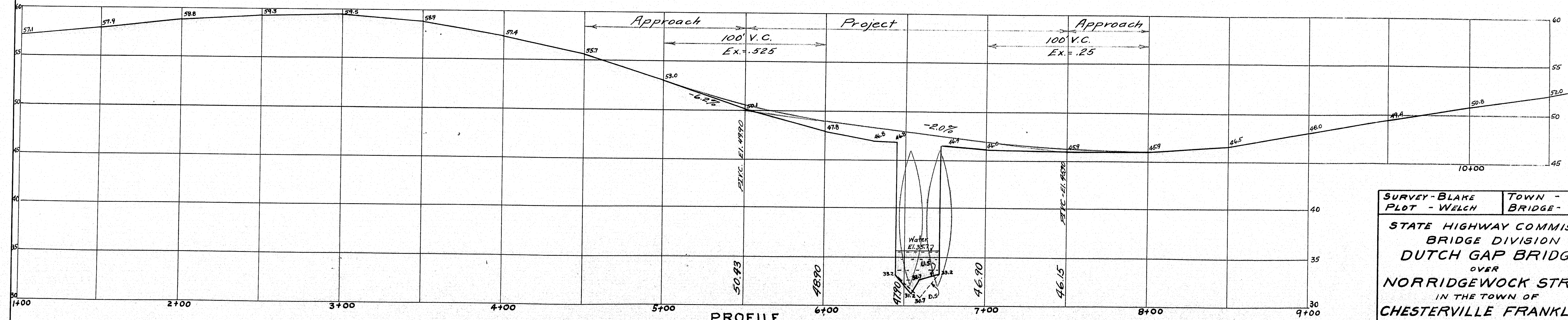
**WIRE CABLE GUARD RAIL**  
 Existing cable and fittings may be used if found in good condition. Guard rail shall be renewed or reset within limits of project. Outside limits of project, reset sufficient length to make satisfactory alignment. New posts will be required where guard rail is reset. Payment will be made at the contract unit price for the length renewed or reset. New anchorages will be required near Sta. 6+00.



$\Delta = 10^\circ 54' R$   
 $D = 3^\circ 00'$   
 $T = 182.25$   
 $L = 363.33$   
 $E = 8.67$

**PLAN**  
 SCALE 1" = 30 FT.

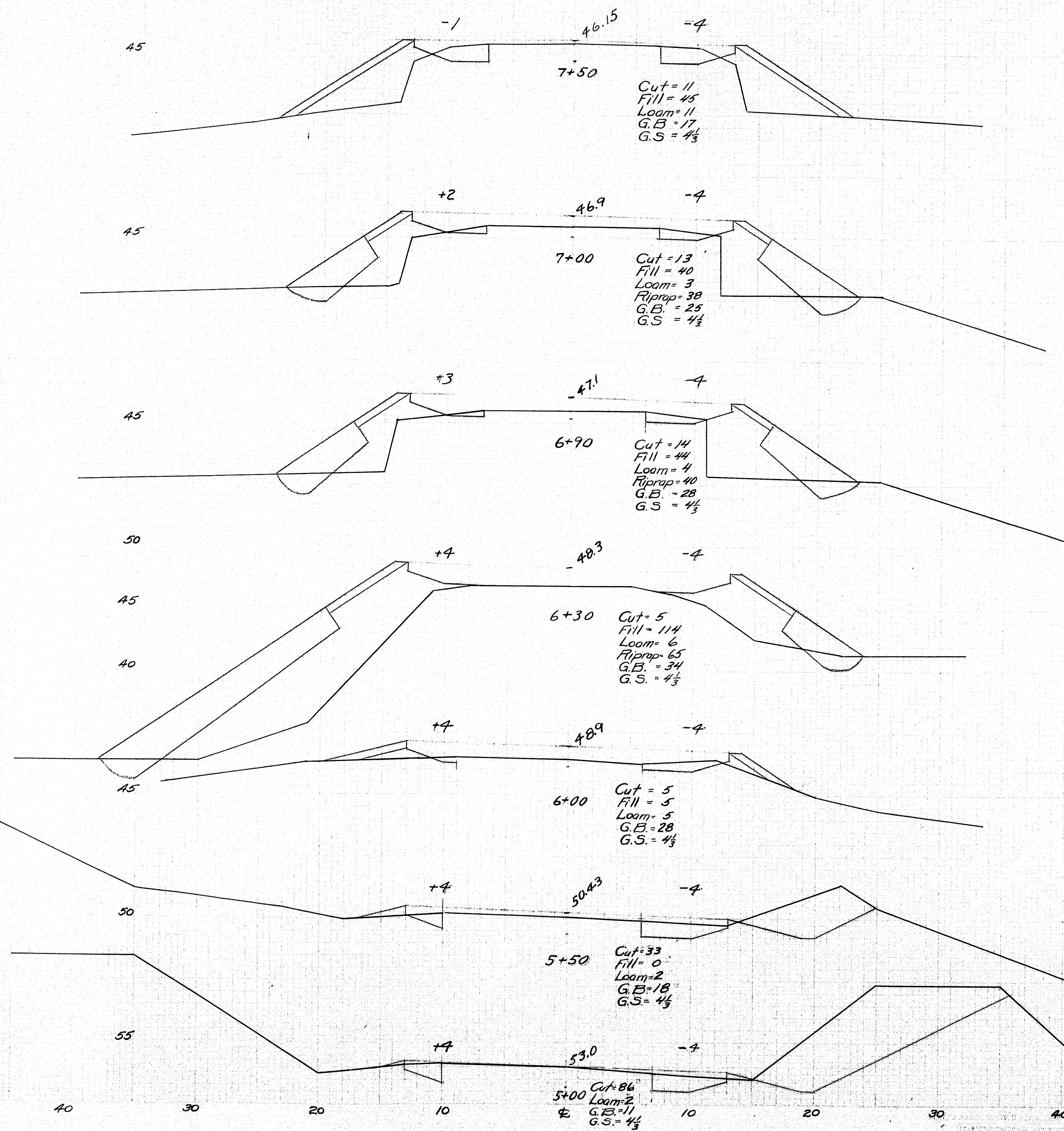
**Notes-**  
**Substructure-** Dry rubble masonry abutts. well laid up and resting on log grillage. One square timber bent at mid-span. Abutments are in good condition except they appear to be tipping inward mid-stream at downstream end. Cap of bent rests on two outside posts only.  
**Superstructure-** Nine round log stringers supporting two layers of 3" transverse planks. Log stringers badly rotted. Bottom layer of plank in poor condition. Top layer almost new.  
**Stream-** Sluggish current. Ordinary high water about 1'-6" below underclearance. Stream banks filled with sawdust. 1936 high water 2'-0" over road.  
**Approaches -** Surface treated gravel in good condition. Road narrows up at bridge.  
**Foundation-** Sounding #1 8' upstream #2 back from face of abut #2. Ground El. 40.5  
 0 to 3.0' by hand  
 3.0' to 8.0' 2' / blow  
 8.0' to 16.0' 13' / blow  
 16.0' to 19.0' 3/8' / blow  
 19.0' to 22.5' 1/4' / blow  
 Thru fine hard packed sand.



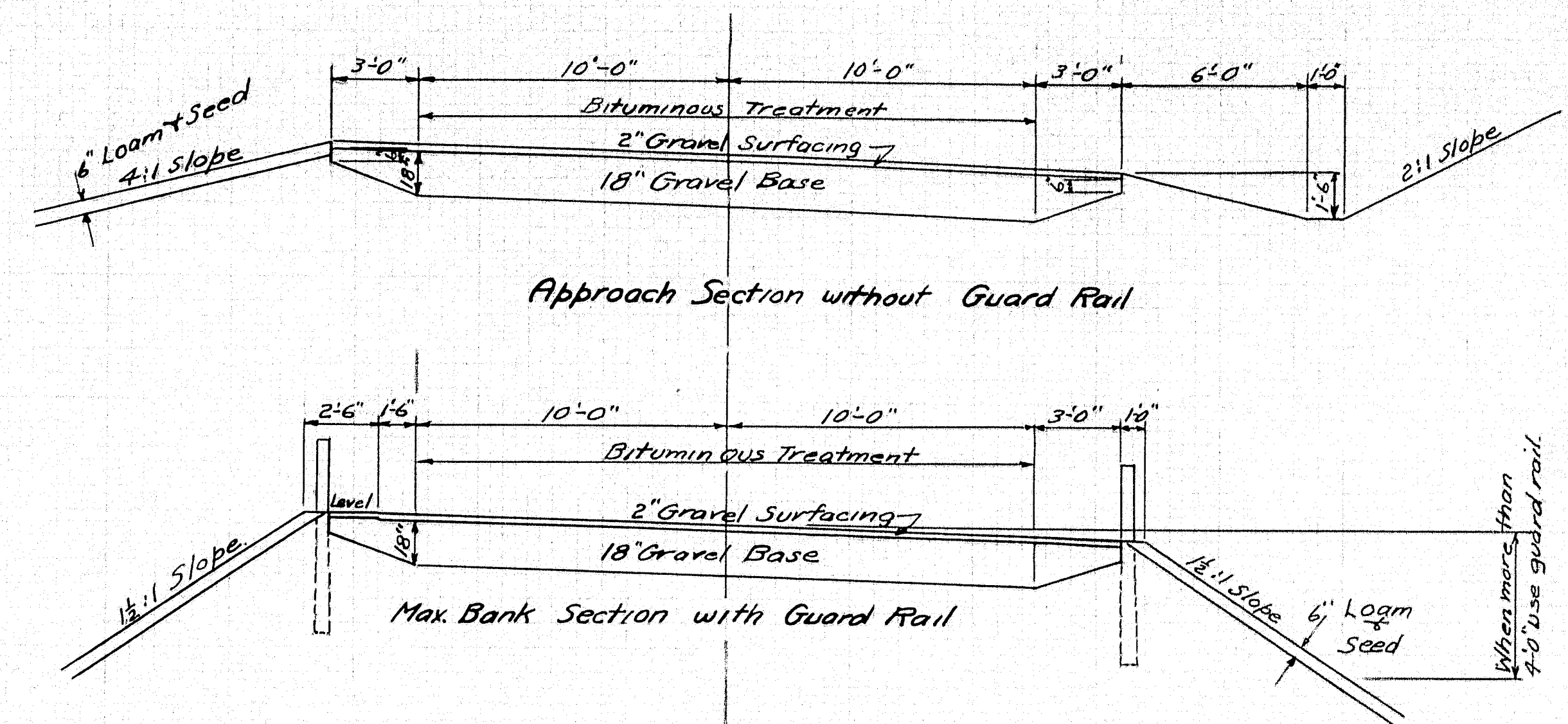
**PROFILE**  
 HOR. SCALE 1" = 30 FT.  
 VERT. 1" = 5 FT.

**SURVEY - BLAKE** **TOWN - 04-03**  
**PLOT - WELCH** **BRIDGE - 3951**  
**STATE HIGHWAY COMMISSION**  
**BRIDGE DIVISION**  
**DUTCH GAP BRIDGE**  
**OVER**  
**NORRIDGEWOCK STREAM**  
**IN THE TOWN OF**  
**CHESTERVILLE FRANKLIN CO.**  
**SURVEY**  
**SHEET 1 OF 3 AUGUSTA, ME. MAY 1946**





Do not excavate the existing roadway for gravel wherever the material is suitable.



Plan L.J.B.  
Check Cotton

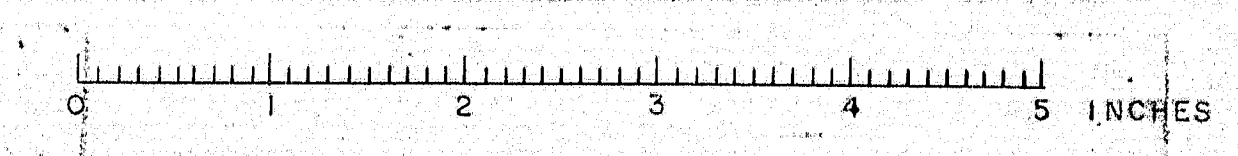
Bridge 3951

STATE HIGHWAY COMMISSION  
BRIDGE DIVISION

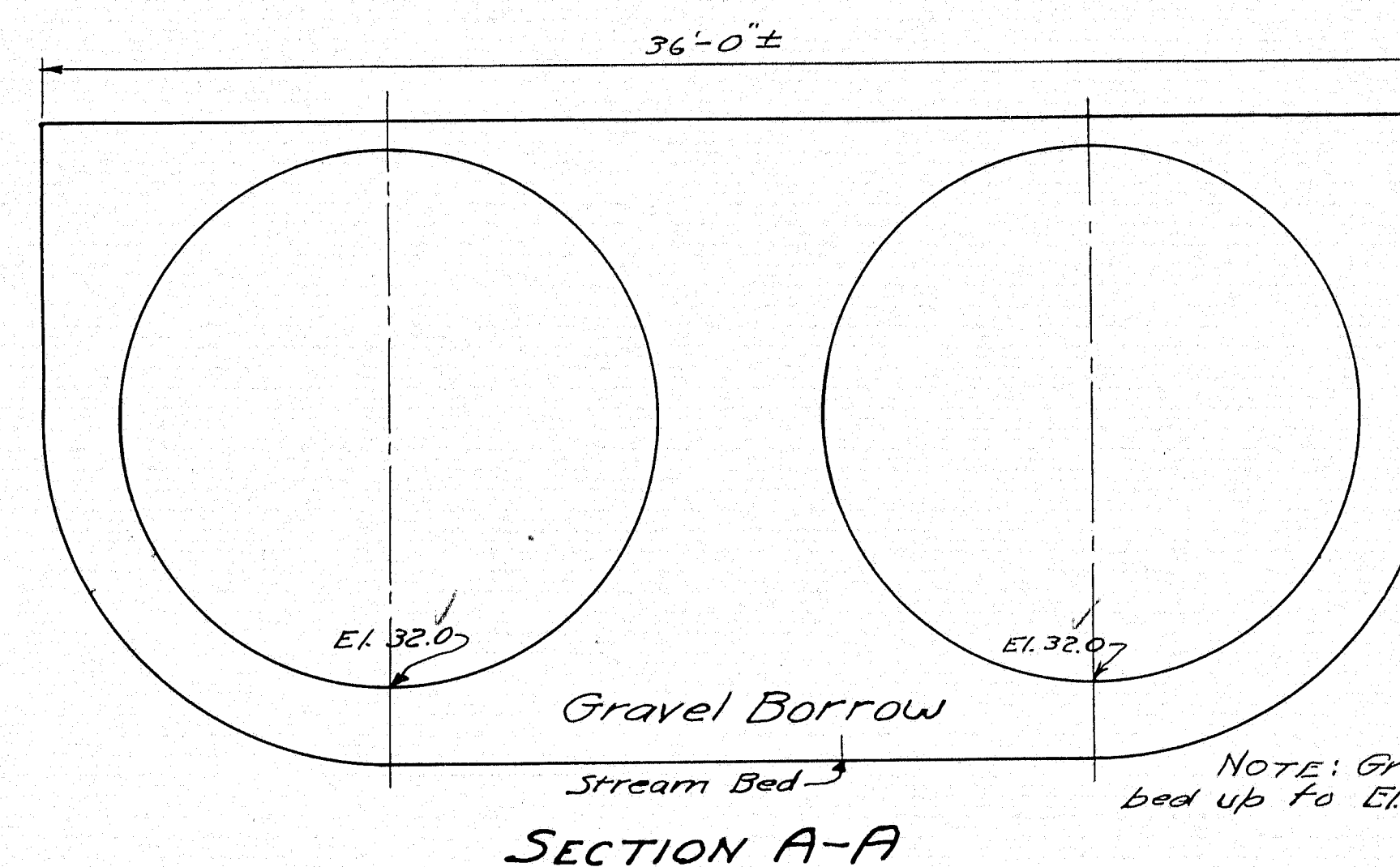
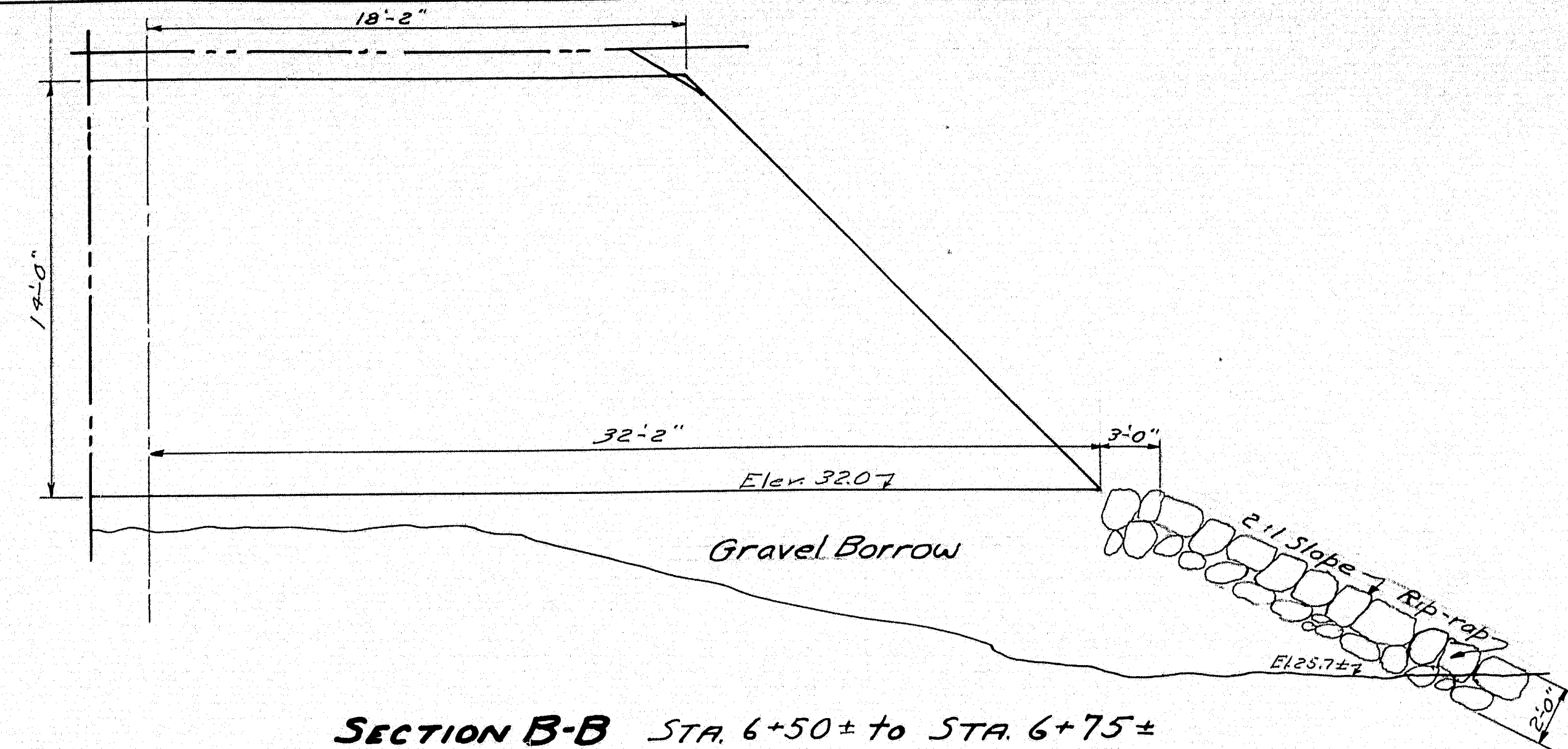
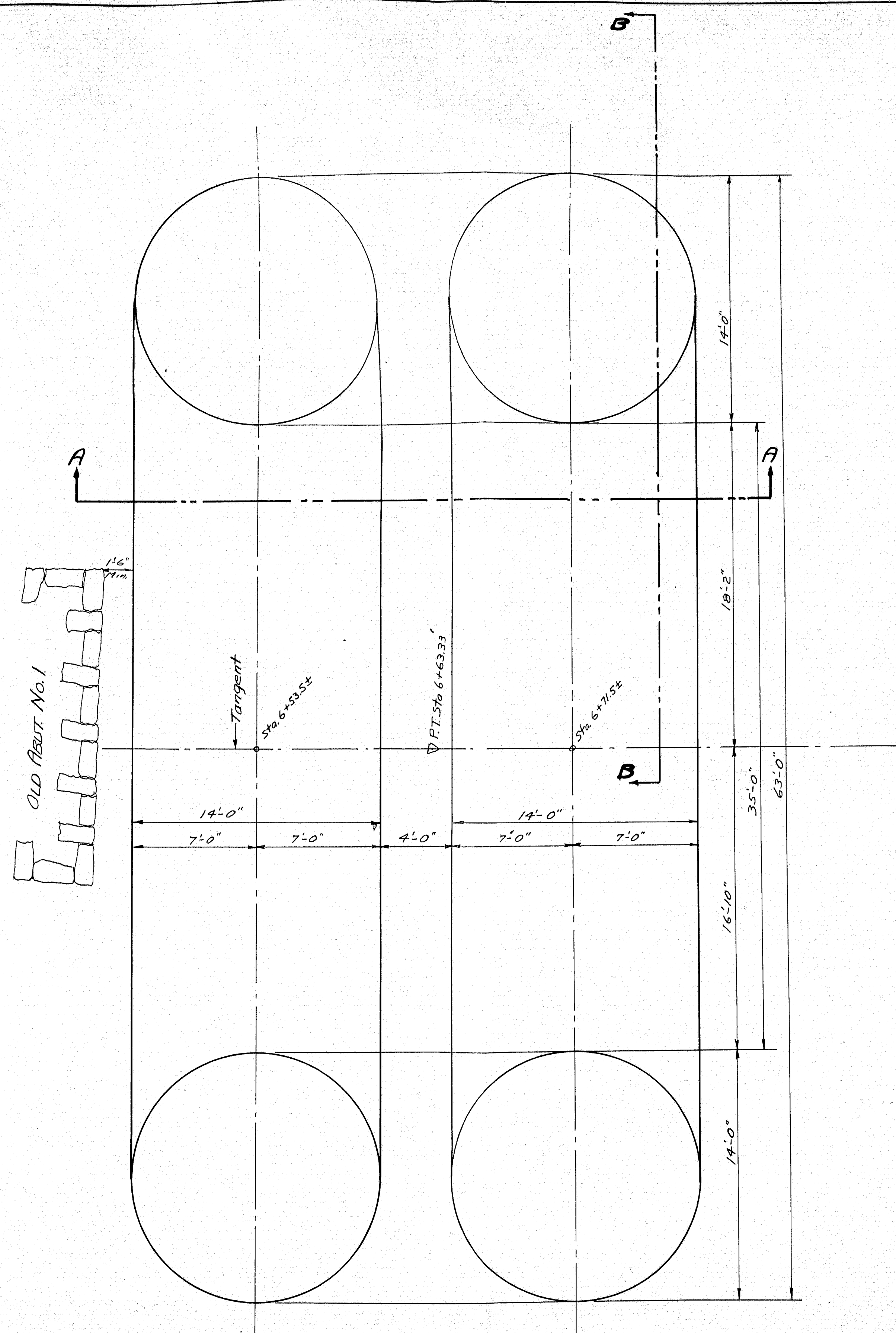
**DUTCH GAP BRIDGE**  
OVER  
**NORRIDGEWOCK STREAM**  
in the town of  
**CHESTERVILLE**  
**FRANKLIN COUNTY**  
CROSS SECTIONS

Sheet 2 of 3 Augusta, Me. April 1947

47-162



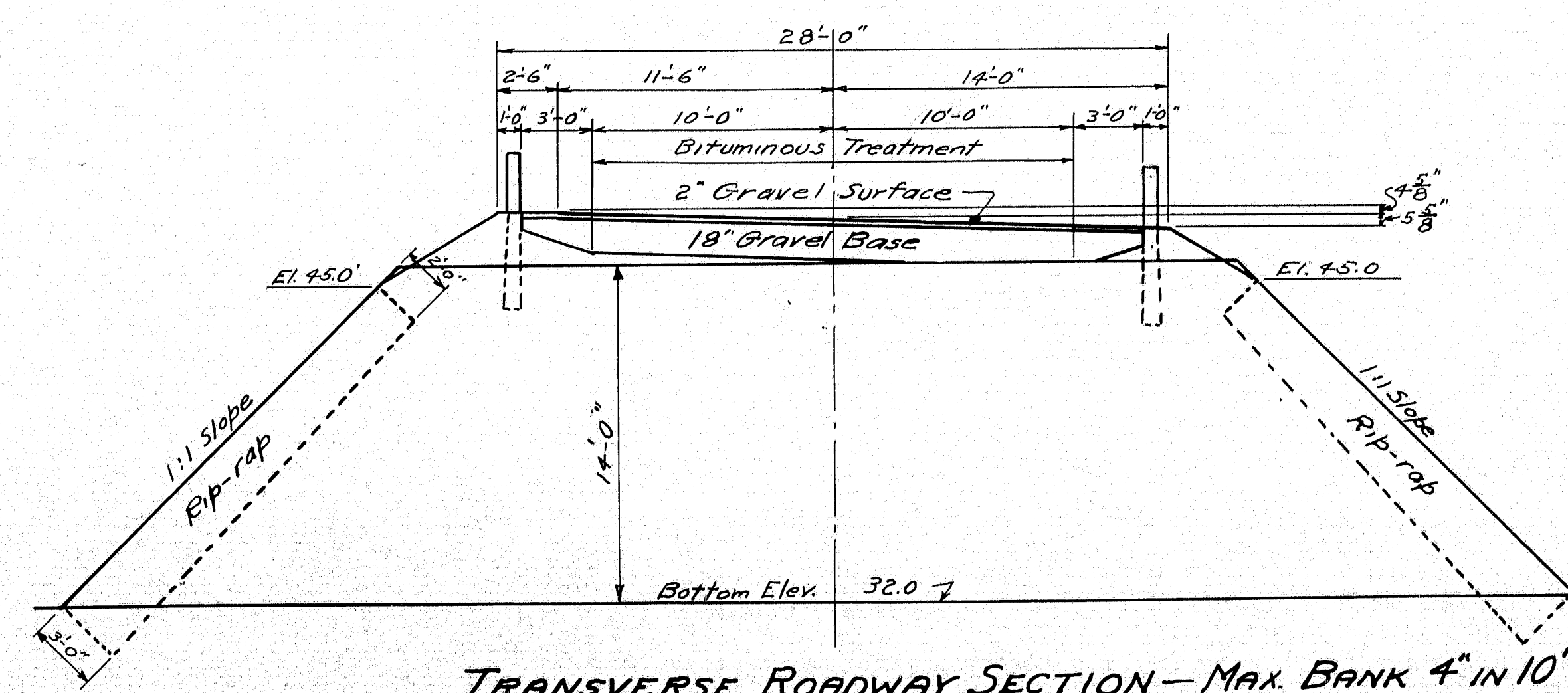




**REQUIREMENTS**

Two #5 Gage Sectional Plate Pipes as shown, 13'-9" or 14'-0" Diameter, field strutted. Plates fully or partially below Elev. 36.0 to be the next gage heavier than that called for above, with a assumed depth of corrugations 1 1/2" with a pitch of 6". If greater depth of corrugations is used, an equivalent weight of metal shall be used. The material and fabrication of the sectional plate pipes shall be in accordance with the latest edition of the A.A.S.H.O. Standard Specification for Highway Bridges.

NOTE: Gravel borrow to be placed on stream bed up to Elev. 32.0 before installing pipes.



Loading H-15-44

Plan L.J.B.  
Check Cotton Bridge 3951

STATE HIGHWAY COMMISSION  
BRIDGE DIVISION

**DUTCH GAP BRIDGE**  
OVER  
**NORRIDGEWOCK STREAM**  
in the town of  
**CHESTERVILLE**  
**FRANKLIN COUNTY**  
GENERAL PLAN

Sheet 3 of 3 Augusta, Me. April 1947